



# Information about Oulu and Technical Centre

Brussels 12.11.2007

Kaija Puhakka

City of Oulu / Technical Centre



## Basic facts about Oulu



- The largest city in northern Finland
- Founded in 1605 by King Karl IX of Sweden opposite the castle built on the island of Linnansaari
- The name Oulu comes from a word in the Sami language meaning floodwater
- Situated by the Gulf of Bothnia, at the mouth of Oulu River, which is an ancient trading site
- The capital of Oulu province since 1776
- From being a town known for tar and salmon, Oulu has evolved into a growing modern centre of competence

Oulu is known for its cooperative, competent people, active development, high-class services, versatile business structure and strong economy. Oulu offers an excellent setting for study, work, research and development.





## Traffic connections

- The distance between Oulu and Helsinki is about 600 km, the same as between Oulu and Nuorgam, the northernmost spot in Finland.
  - The traffic connections are direct and fast.
  - All main roads meet in Oulu.
  - The flight to Helsinki takes about an hour, and there are 17 daily flights to Helsinki.
  - Oulu railway station is one of the busiest in Finland.
- The Pendolino train journey from Oulu to Helsinki takes less than six hours.
- The port of Oulu is open all year round.

You can also reach Oulu via Internet: [www.ouka.fi](http://www.ouka.fi). Approximately 23,000 people visit the City of Oulu website daily.

In addition to the front page, the most popular destinations on the website include the Oulu map, the library, current information, webcam, weather, job opportunities, Oulu events calendar and sports, social and Health services.



## Population and surface area

<b>Population on 1 Jan 2007</b>	<b>Oulu</b>	130 178
	<b>Oulu region</b>	206 000
<b>Average population growth / year</b>	<b>Oulu</b>	1 000
	<b>Oulu Region</b>	3 400

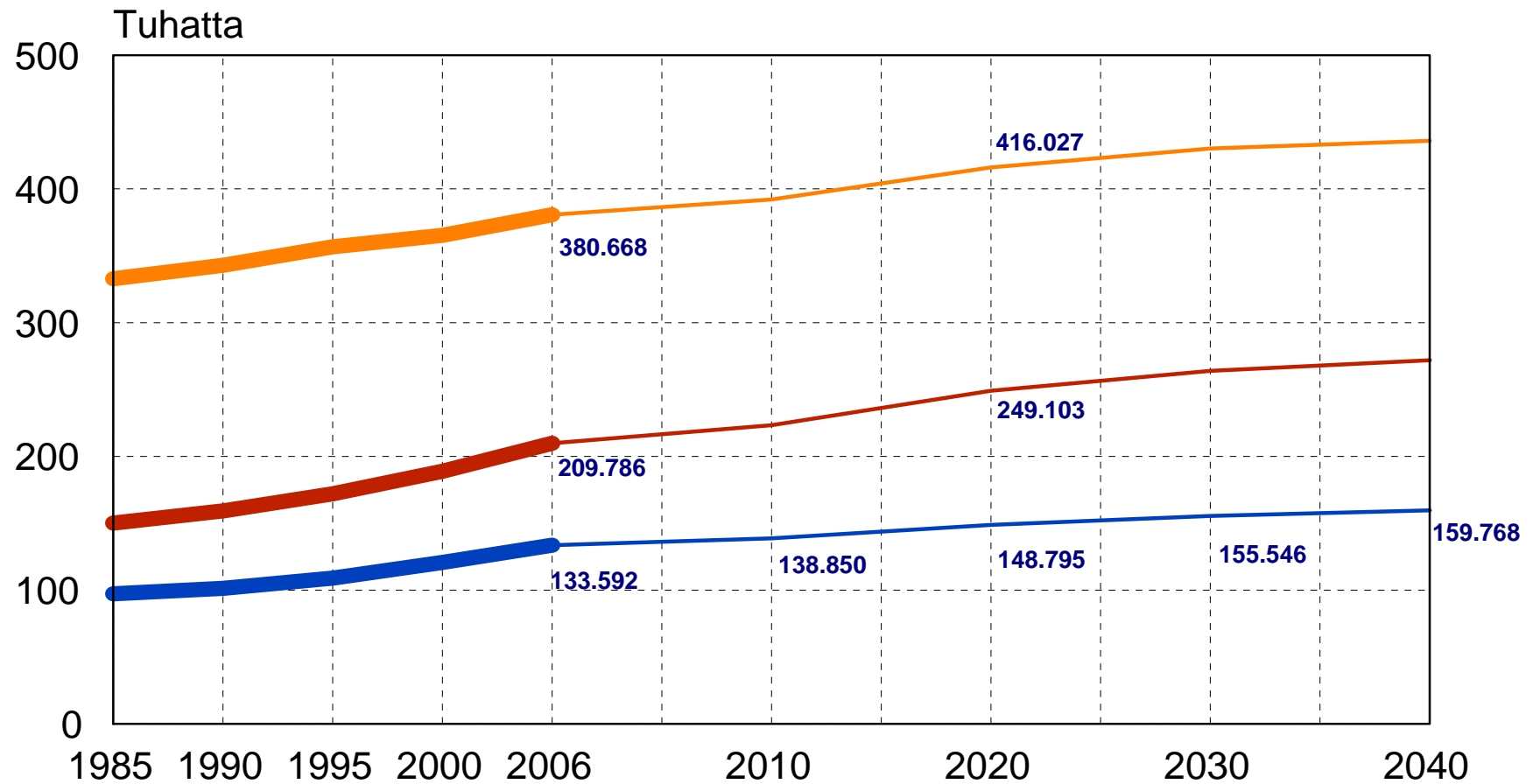
- In terms of population, Oulu is the sixth largest city in Finland
- One of the fastest growing urban centres in the country
- On Jan 1<sup>st</sup> 2007, the average age of people living in Oulu was 36.3 years.

### Surface area

449,2 km<sup>2</sup>  
 land 369,7 km<sup>2</sup>  
 water 79,5 km<sup>2</sup>



## Väestömuutos Pohjois-Pohjanmaalla, Oulussa ja kaupunkiseudulla vuoteen 2040 saakka



Vmuutos

Lähde: Tilastokeskus 2007, mukana Ylikiiminki.



## City Council



- The highest decision-making organ in the city of Oulu which is elected in a local election arranged every four years
- There are 67 Councillors in the City Council
- makes decisions concerning the basis of economy and financing, and guides the development of the city in a concrete manner by wielding economic power
- sets qualitative and operative objectives for the various administrative sectors by budget fund allocation
- • makes decisions concerning the structure of municipal administration, appoints elected officials and major municipal officeholders

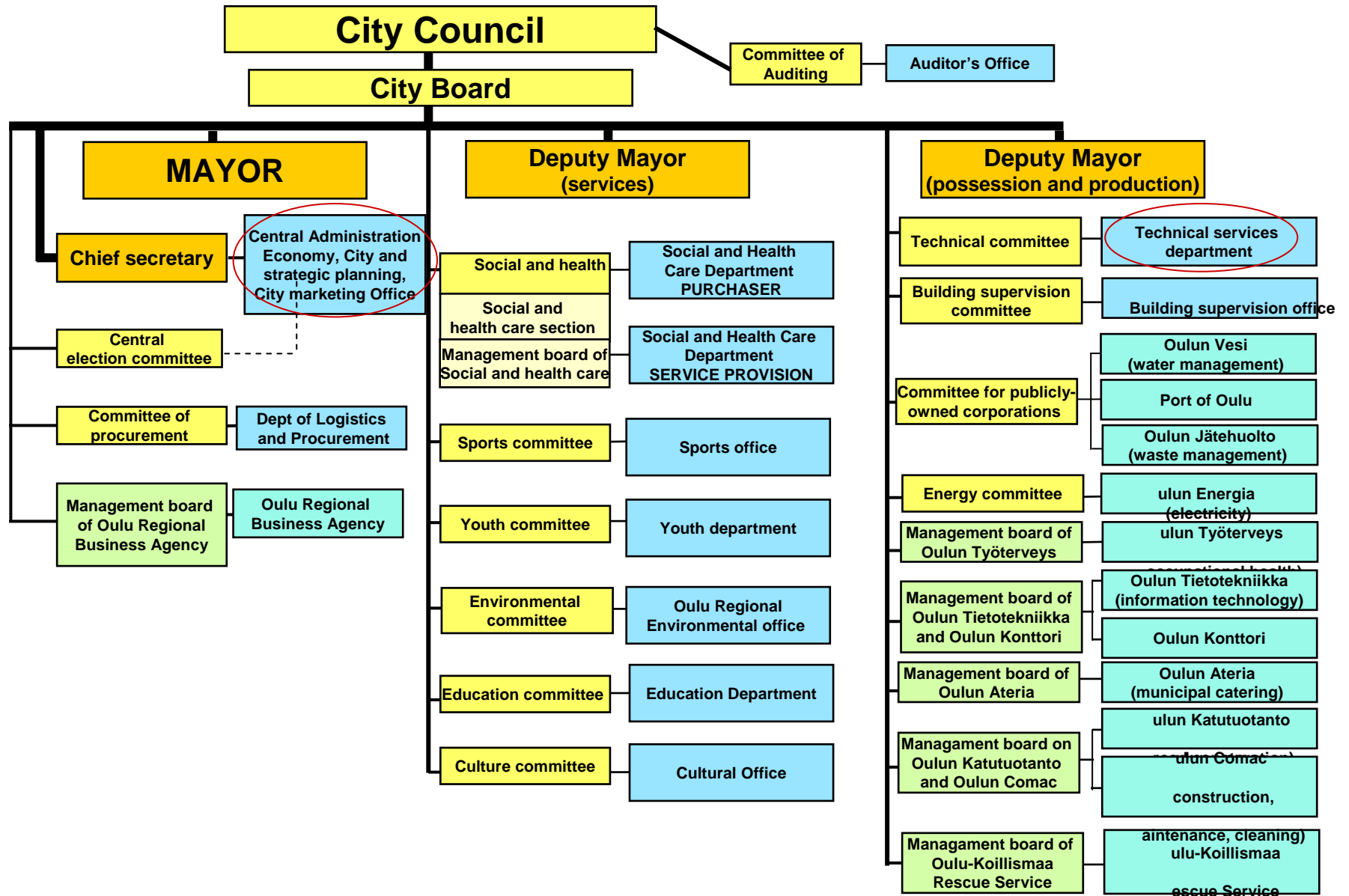
<i>Party/group</i>	<i>Votes</i>	<i>%</i>	<i>Councillors 00-&gt;04</i>	
Centre Party	11,988	23.2	16	+ 2
National Coalition P.	11,572	22.4	15	+ 4
Social Democrats	9,268	18.0	12	+ 1
Left Wing Alliance	8,789	17.0	12	+ 2
Greens	7,914	15.3	10	+ 3
Christian Democrats	1,778	3,4	2	- 1
Other candidates	315	0,7	0	0
<b>Total</b>	<b>51,624</b>	<b>100,0</b>	<b>67</b>	<b>8</b>

In addition 342 (0.7 %) disqualified votes. Poll 51.9.





**Administrative organization of the City of Oulu, 1 January 2007**  
 By areas of responsibility of the Mayor and Deputy Mayors



## Business and industry

Oulu is internationally known as a city of technology. Cooperation between enterprises, research, education and public organisations has produced significant results in Oulu, which is known internationally as a major centre of competence in the field of high technology, particularly IT and wellness technology.



More traditional industries, such as wood refining, paper and steel industry, are also strong in Oulu.

Oulu is investing and will continue to invest more and more in the development of extensive businesses as well as logistics, information technology, content production, media, well-being and bio and environmental fields.





## Most important employers in 2007

Employer	Personnel
City of Oulu	9,667
Northern Ostrobothnia Hospital District	5,574
Nokia Group	4,696
Oulu University	3,000
The Oulu Region Joint Authority for Vocational Training	1,491
Kesko Group	1,315
Stora Enso Group	1,020
Itella Corporation	870
Cooperative Arina Group	797
Deaconesses' Institution	651



## Technical field

### Technical Centre

- Management of built property
- Management of land and forest property
- Land acquisition and delivery
- City planning and development
- Street and green area services

### City-owned land property

	22,848 ha
- Forestry land	14,287 ha
- Agricultural land	259,5 ha
- Water areas	6,470 ha
- Areas included in the city plan	10,011 ha
- Value of land property	221.3 mil €



## Technical field

### City-owned building estates:

2.7 mil. building-m<sup>3</sup>  
0.549 mil. floor-m<sup>2</sup>

Value of building estates:

book value 296.5 mil €  
current value 528 mil €

### Premises rented for service purposes:

0.067 mil. floor-m<sup>2</sup>  
140 units

### Housing construction level:

- Apartments, Block of flats
- Apartments, Row houses
- Single family houses

1400-1500 dwellings / year  
700  
350  
350

### Traffic channels

- Roads inside the city plan
- Roads outside the city plan
- Light traffic tracks/paths connected to roads
- Separate light traffic paths
- Total road network (maintained by city authorities)
- Traffic channel investments

548 km  
110 km  
210 km  
266 km  
1,134 km  
23.05 mil €



## Technical field

### Oulu has

- Bridges 330
- Parking lots and squares 138,000 m<sup>2</sup>
- Public sanitation areas 4.7 mil m<sup>2</sup>
- Outdoor lamp posts 27,200
- Traffic light intersections 132
- Boat places 223
- Boat docks 809
- Built green areas (parks) 914 ha

housing units completed in 2006 1,395



**THANK YOU!**

